



The Signature of Quality®



PRODUCT PORTFOLIO

The Leader In Fresh Food Merchandising

July 2022



The Signature of Quality

Index

BAKERY AND DELI SERVICE AND SELF-SERVE CASES

Pages 1-4	Italian Glass Series
Page 5-6	Series 90
Page 7-8	Curved Glass Series
Page 9-10	High Volume Series

SELF-SERVE CASES

Page 11	Low Profile Merchandisers
Page 12-14	High Profile Vision Series Merchandisers
Page 15	High Profile 24" Slim Line Merchandisers
Page 16	High Profile Milk Merchandisers
Page 17-18	High Profile Multi-Deck Merchandisers
Page 18-19	Island Merchandisers
Page 19	End Cap Merchandisers
Page 20	Hybrid Merchandisers
Page 21	Convertible Service Over Refrigerated Self-Serve Merchandisers
Page 22	Prepared Foods Refrigerated Self-Serve Merchandiser
Page 23	Versatile Service-Top Over Refrigerated Self-Serve Merchandisers
Page 24	Under-Counter/In-Counter Merchandisers
Page 25	Sandwich or Salad Prep Over Refrigerated Self-Serve Merchandisers

Continued on next page >

Index

COUNTERTOP

- Page 25-26 Countertop Merchandisers
- Page 26 High Profile Self-Serve Countertop Merchandisers

VISION SERIES QUICK-SHIP AND ELEMENTS DISPLAY CASES

- Page 26 Vision Series Quick-Ship Merchandisers
- Page 27 Bakery and Deli Cases, Countertop Merchandisers,
Specialty Display Cases



Refrigerated



Heated



Non-Refrigerated

Anti-microbial powder coating

Federal Industries has added an anti-microbial technology to its powder coating. This new technology slowly uses silver ions, which help protect the cured paint film from the growth of microbes. This process helps in preventing discoloration, unpleasant odors, and degradation/corrosion, caused by the build-up of bacteria on coated surfaces. It is exceptionally durable and resistant to elevated temperatures (up to 100°C), even if the surface has been subjected to wear and exterior exposure.

*Antimicrobial is limited to the treated surface. Visit our website at www.federalind.com for more information.

WARRANTY AND PARTS

For warranty information, please visit our website at:

www.federalind.com/warranty



For all non-warranty parts sales visit:

1200 Greenbriar Drive • Addison, IL 60101 • Toll Free 800-438-8898 • Fax 888-513-0259 • Email: customerservice@partstown.com



The Signature of Quality®

Italian Glass Series

BAKERY AND DELI SERVICE CASES



Model ITR4834-B18



Model ITD4834-B18

MODEL	DESCRIPTION (L X D X H)	ELECTRICAL	SHIP WEIGHT
REFRIGERATED ❄️			
ITR3626-B18	36" x 30.75" x 44"	120/60/1	625
ITR4826-B18	48" x 30.75" x 44"	120/60/1	680
ITR6026-B18	60" x 30.75" x 44"	120/60/1	820
ITR3634-B18	36" x 30.75" x 52"	120/60/1	650
ITR4834-B18	48" x 30.75" x 52"	120/60/1	820
ITR6034-B18	60" x 30.75" x 52"	120/60/1	930
NON-REFRIGERATED N°			
ITD3626-B18	36" x 30.75" x 44"	120/60/1	550
ITD4826-B18	48" x 30.75" x 44"	120/60/1	640
ITD6026-B18	60" x 30.75" x 44"	120/60/1	815
ITD3634-B18	36" x 30.75" x 52"	120/60/1	575
ITD4834-B18	48" x 30.75" x 52"	120/60/1	771
ITD6034-B18	60" x 30.75" x 52"	120/60/1	773
ACCESSORIES <i>Italian Glass Cases</i>			
Stainless Steel Shelving (Per Tier)			
Recessed Casters (Includes Cord and Plug)			
2 1/2" or 4" Caster (Includes Cord and Plug)			
Cord and Plug (Standard on ITD Models)			
6" Legs			
6" Legs with Skirt (Grey to Match Metal Frame)			
Seismic Legs			
All 17" Deep Shelves			
Reflective Ends (Pair)			
Reflective Rear Doors (Pair)			
Front Air Intake and Discharge			
Rear Wrap Board			
Remote Refrigeration without Compressor (EEV Included)			
Remote Refrigeration with Indoor Condensing Unit (EEV Included)			
Remote Refrigeration with Outdoor Condensing Unit (EEV Included)			
Joining kit for Continuous Line-ups (N/A with Casters)			
Laminated Base (B18 Models Only)			
(Standard Colors: Walnut, Natural Oak, Cherry, Beige, White, Black)			
Laminate Base			
Formica® Standard Offerings (finishings ending in -58, -NT and -43)			
Wilsonart® Standard Offerings (finishings ending in -38 and -60)			
Stainless Steel Exterior			

Italian Glass Series

BAKERY AND DELI SELF-SERVE CASES

MODEL	DESCRIPTION (L X D X H)	ELECTRICAL	SHIP WEIGHT
-------	-------------------------	------------	-------------

REFRIGERATED ❄️

ITRSS3626-B18	36" x 33" x 44"	120/60/1	625
ITRSS4826-B18	48" x 33" x 44"	120/60/1	680
ITRSS6026-B18	60" x 33" x 44"	208-240/60/1	820
ITRSS3634-B18	36" x 33" x 52"	120/60/1	650
ITRSS4834-B18	48" x 33" x 52"	120/60/1	800
ITRSS6034-B18	60" x 33" x 52"	208-240/60/1	930

NON-REFRIGERATED N°

ITDSS3626F-B18	36" x 30.75" x 44"	120/60/1	550
ITDSS4826F-B18	48" x 30.75" x 44"	120/60/1	640
ITDSS6026F-B18	60" x 30.75" x 44"	120/60/1	700
ITDSS3634F-B18	36" x 30.75" x 52"	120/60/1	575
ITDSS4834F-B18	48" x 30.75" x 52"	120/60/1	690
ITDSS6034F-B18	60" x 30.75" x 52"	120/60/1	800

NON-REFRIGERATED (SLIDING DOORS ON FRONT) N°

ITDSS3626-B18	36" x 30.75" x 44"	120/60/1	550
ITDSS4826-B18	48" x 30.75" x 44"	120/60/1	640
ITDSS6026-B18	60" x 30.75" x 44"	120/60/1	700
ITDSS3634-B18	36" x 30.75" x 52"	120/60/1	575
ITDSS4834-B18	48" x 30.75" x 52"	120/60/1	690
ITDSS6034-B18	60" x 30.75" x 52"	120/60/1	800

ACCESSORIES Italian Glass Cases

Stainless Steel Shelving
Stainless Steel Exterior
Recessed Casters (Includes Cord and Plug)
2 1/2" or 4" Caster (Includes Cord and Plug)
Cord and Plug (Standard on ITDSS Models)
6" Legs
6" Legs with Skirt
Seismic Legs
All 17" Deep Shelves
Reflective Ends (Pair)
Reflective Rear Doors (Pair)
Front Air Intake and Discharge
Rear Wrap Board
Remote Refrigeration without Compressor
Remote Refrigeration with Outdoor Condensing Unit
Remote Refrigeration with Indoor Condensing Unit
Joining Kit for Continuous Line-ups (N/A with Casters)
Laminate Base
Formica® Standard Offerings (finishings ending in -58, -NT and -43)
Wilsonart® Standard Offerings (finishings ending in -38 and -60)
Security Cover (Includes rear door lock) (ITRSS Only)



Model ITDSS4834F-B18



Model ITRSS4834-B18



The Signature of Quality®

Italian Glass Series

**BAKERY AND DELI SERVICE
AND SELF-SERVE COUNTER CASES**



Model ITRSS4834
Counter not provided



Model ITD4826
Counter not provided



Model ITD4826
Counter not provided

MODEL	DESCRIPTION (L X D X H)	ELECTRICAL	SHIP WEIGHT
-------	-------------------------	------------	-------------

REFRIGERATED SELF-SERVE – DROP-IN ❄️

ITRSS3626	36" x 33" x 26"	120/60/1	537
ITRSS4826	48" x 33" x 26"	120/60/1	720
ITRSS6026	60" x 33" x 26"	208-240/60/1	800
ITRSS3634	36" x 33" x 34"	120/60/1	586
ITRSS4834	48" x 33" x 34"	120/60/1	770
ITRSS6034	60" x 33" x 34"	208-240/60/1	850

NON-REFRIGERATED SELF-SERVE №

ITDSS3626F	36" x 30" x 26"	120/60/1	250
ITDSS4826F	48" x 30" x 26"	120/60/1	325
ITDSS6026F	60" x 30" x 26"	120/60/1	450
ITDSS3634F	36" x 30" x 34"	120/60/1	275
ITDSS4834F	48" x 30" x 34"	120/60/1	350
ITDSS6034F	60" x 30" x 34"	120/60/1	475

NON-REFRIGERATED SELF-SERVE – FRONT SLIDING DOORS №

ITDSS3626	36" x 30" x 26"	120/60/1	350
ITDSS4826	48" x 30" x 26"	120/60/1	410
ITDSS6026	60" x 30" x 26"	120/60/1	550
ITDSS3634	36" x 30" x 34"	120/60/1	500
ITDSS4834	48" x 30" x 34"	120/60/1	450
ITDSS6034	60" x 30" x 34"	120/60/1	625

REFRIGERATED SERVICE – DROP-IN ❄️

ITR3626	36" x 30" x 26"	120/60/1	558
ITR4826	48" x 30" x 26"	120/60/1	720
ITR6026	60" x 30" x 26"	120/60/1	800
ITR3634	36" x 30" x 34"	120/60/1	696
ITR4834	48" x 30" x 34"	120/60/1	841
ITR6034	60" x 30" x 34"	120/60/1	850

NON-REFRIGERATED SERVICE №

ITD3626	36" x 30" x 26"	120/60/1	359
ITD4826	48" x 30" x 26"	120/60/1	410
ITD6026	60" x 30" x 26"	120/60/1	550
ITD3634	36" x 30" x 34"	120/60/1	407
TD4834	48" x 30" x 34"	120/60/1	450
ITD6034	60" x 30" x 34"	120/60/1	625

ACCESSORIES *Italian Glass Cases*

- Stainless Steel Shelving (Per Tier)
- Cord and Plug (Standard on ITDSS Models)
- All 17" Deep Shelves (N/A on ITRSS Models)
- Reflective Ends (Pair)
- Reflective Rear Doors (Pair)
- Remote Refrigeration without Compressor
- Remote Refrigeration with Outdoor Condensing Unit
- Remote Refrigeration with Indoor Condensing Unit
- Joining Kit for Continuous Line-ups (N/A with Casters)
- Security Cover (Includes rear door lock) (ITRSS Only)

Italian Glass Series

BAKERY AND DELI SERVICE HEATED CASE (COMING FALL OF 2022)

MODEL	DESCRIPTION (L X D X H)	ELECTRICAL	SHIP WEIGHT
BAKERY AND DELI SERVICE HEATED CASE 🔥			
ITH3626-B18	36 x 30.75 x 44	208-240/60/1	625
ITH4826-B18	48 x 30.75 x 44	208-240/60/1	680
ITH6026-B18	60 x 30.75 x 44	208-240/60/1	820
ITH3634-B18	36 x 30.75 x 52	208-240/60/1	650
ITH4834-B18	48 X 30.75 X 52	208-240/60/1	820
ITH6034-B18	60 X 30.75 X 52	208-240/60/1	930

BAKERY AND DELI SERVICE HEATED COUNTER CASE 🔥

ITH3626	36 x 30 x 26	208-240/60/1	558
ITH4826	48 X 30 X 26	208-240/60	720
ITH6026	60 X 30 X 26	208-240/60/1	800
ITH3634	36 X 30 X 34	208-240/60/1	696
ITH4834	48 X 30 X 34	208-240/60/1	841
ITH6034	60 X 30 X 34	208-240/60/1	850

ACCESSORIES (SUBJECT TO CHANGE)

Stainless Steel Shelving
Reflective Ends
Rear Package Shelf
Joining Kit for Continuous Line-ups (N/A with Casters)
Laminate Base
Formica® Standard Offerings (finishings ending in -58, -NT and -43)
Wilsonart® Standard Offerings (finishings ending in -38 and -60)
2 1/2" or 4" Caster (Includes Cord and Plug)
6" Legs
6" Legs with Skirt
Seismic Legs



Model ITH4834-B18
Shown with optional glass shelves



Model ITH4826
Shown with optional glass shelves



Use in a line-up with the Refrigerated or Non-Refrigerated Italian Glass merchandisers



The Signature of Quality®

SERIES 90

Bakery Cases

MODEL	DESCRIPTION (L X D X H)	ELECTRICAL	SHIP WEIGHT
REFRIGERATED ❄️			
SNR48SC	48" x 37.75" x 48"	120/60/1	750
SNR59SC	59" x 37.75" x 48"	120/60/1	1,007
SNR77SC	77" x 37.75" x 48"	120/60/1	1,150
DUAL (Left Half Refrigerated, Right Half Non-Refrigerated, from Customer Side) ❄️ N°			
SN483SC	48" x 37.75" x 48"	120/60/1	750
SN593SC	59" x 37.75" x 48"	120/60/1	865
SN773SC	77" x 37.75" x 48"	120/60/1	1,075
NON-REFRIGERATED N°			
SN48	48" x 37.75" x 48"	120/60/1	640
SN59	59" x 37.75" x 48"	120/60/1	802
SN77	77" x 37.75" x 48"	120/60/1	865
SN96	96" x 37.75" x 48"	120/60/1	935
NON-REFRIGERATED SELF-SERVE BAKERY N°			
SN48SS	48" x 37.75" x 48"	120/60/1	600
SN59SS	59" x 37.75" x 48"	120/60/1	710
SN77SS	77" x 37.75" x 48"	120/60/1	708



Model SN77/SNR48



Model SN77
Lift-up front glass



Model SN4HD/ Model SN6CD



Model SN6CDSS

Deli Cases

MODEL	DESCRIPTION (L X D X H)	ELECTRICAL	SHIP WEIGHT
REFRIGERATED SERVICE ❄️			
SN4CD	48" x 37.75" x 48"	120/60/1	770
SN6CD	72" x 37.75" x 48"	120/60/1	1,000
SN8CD	96" x 37.75" x 48"	120/60/1	1,357
REFRIGERATED SELF-SERVE - STANDARD W/COND. PUMP ❄️			
SN4CDSS	48" x 37.75" x 34"	120/60/1	610
SN6CDSS	72" x 37.75" x 34"	120/60/1	800
SN8CDSS	96" x 37.75" x 34"	120/60/1	1,065
HEATED 🔥			
SN4HD	48.25" x 37.75" x 48"	208-240/60/1 (4 wire)	650
SN6HD	77.25" x 37.75" x 48"	208-240/60/1 (4 wire)	860

ACCESSORIES Series '90 Cases

- Base Trim Specify White or Black
- Base Trim Stainless Steel
- End Glass Trim Specify White or Black
- Black or Chrome Shelves
- Black Interior
- 2 1/2" Casters (Includes Cord and Plug) (Not Available on Heated or Self-Serve)
- 4" Casters (Includes Cord and Plug) (Not Available on Heated or Self-Serve)
- 6" Legs
- Seismic Legs
- Cord and Plug (Not Available Heated and Self-Serve Refrigerated)
- Fish Case Package (For Refrigerated Deli, Includes Ice Pan) (floor drain required) (Not available with mezzanine shelf)
- Front Glass and Rear Door Locks
- Front Package Shelf
- Glass Shelves In Lieu of Wire (Per Tier)

Continued on next page >



The Signature of Quality

ACCESSORIES Series '90 Cases (Continued)

Laminate Base
Formica® Standard Offerings (finishings ending in -58, -NT and -43)
Wilsonart® Standard Offerings (finishings ending in -38 and -60)
Plain Base without Laminate
Stainless Steel Base In Lieu of Laminate
Decorative End Panels and Front, Laminated
Mezzanine Shelf for Refrigerated Deli, Additional (Lighted) (Not Available on Self-Serve Units)
48"
72"
96"
Rear Wrapping Board for Bakery
48"
59"
77"
Reflective Ends (Pair)
White or Mirrored Interior Ends with Laminated Exterior (Not Available on Self-Serve Units)
Reflective Rear Doors (Pair)
Stainless Steel Interior (In Lieu of White)
Stainless Steel Display Deck
Stainless Steel Display Deck (SN8CD only)
Scale Stand
Step Pan Holder or Riser (Per Section, Specify 2 Step or 3 Step)
Top Service Shelf (Stainless Steel or Glass)
Condensate Evaporator Assembly – Required if No Drain Available (Field Install Kit, Dedicated 120V / 15A Circuit Required)
Condensate Pump (In Lieu of Pan)



The Signature of Quality®

CURVED GLASS SERIES When ordering, specify case line-up and finish.

Bakery Cases



Model CGR5048



Model CGD7748



Model CGR5960DZH



Model CGR7748CD

MODEL	DESCRIPTION (L X D X H)	ELECTRICAL	SHIP WEIGHT
REFRIGERATED ❄️			
CGR3142	31" x 35.31" x 42"	120/60/1	460
CGR3148	31" x 35.31" x 48"	120/60/1	500
CGR3642	36" x 35.31" x 42"	120/60/1	470
CGR3648	36" x 35.31" x 48"	120/60/1	510
CGR5042	50" x 35.31" x 42"	120/60/1	615
CGR5048	50" x 35.31" x 48"	120/60/1	721
CGR5942	59" x 35.31" x 42"	120/60/1	735
CGR5948	59" x 35.31" x 48"	120/60/1	821
CGR7742	77" x 35.31" x 42"	120/60/1	890
CGR7748	77" x 35.31" x 48"	120/60/1	930

NON-REFRIGERATED N°			
CGD3148	31" x 35.31" x 48"	120/60/1	270
CGD3642	36" x 35.31" x 42"	120/60/1	385
CGD3648	36" x 35.31" x 48"	120/60/1	430
CGD5042	50" x 35.31" x 42"	120/60/1	671
CGD5048	50" x 35.31" x 48"	120/60/1	625
CGD5942	59" x 35.31" x 42"	120/60/1	505
CGD5948	59" x 35.31" x 48"	120/60/1	535
CGD7742	77" x 35.31" x 42"	120/60/1	685
CGD7748	77" x 35.31" x 48"	120/60/1	715

DUAL VERTICAL (Left Half Refrigerated, Right Half Non-Refrigerated, from Customer Side) ❄️ N°			
CGR5042DZ	50" x 35.31" x 42"	120/60/1	615
CGR5048DZ	50" x 35.31" x 48"	120/60/1	690
CGR5942DZ	59" x 35.31" x 42"	120/60/1	735
CGR5948DZ	59" x 35.31" x 48"	120/60/1	783
CGR7742DZ	77" x 35.31" x 42"	120/60/1	890
CGR7748DZ	77" x 35.31" x 48"	120/60/1	960

DUAL HORIZONTAL (Bottom Refrigerated, Top Non-Refrigerated) ❄️ N°			
CGR3660DZH	36" x 35.31" x 60"	120/60/1	580
CGR5060DZH	50" x 35.31" x 60"	120/60/1	800
CGR5960DZH	59" x 35.31" x 60"	120/60/1	825
CGR7760DZH	77" x 35.31" x 60"	120/60/1	1,232

Deli Cases

MODEL	DESCRIPTION (L X D X H)	ELECTRICAL	SHIP WEIGHT
REFRIGERATED DELI ❄️			
CGR3648CD	36" x 35.31" x 48"	120/60/1	470
CGR5048CD	50" x 35.31" x 48"	120/60/1	620
CGR5948CD	59" x 35.31" x 48"	120/60/1	650
CGR7748CD	77" x 35.31" x 48"	120/60/1	995
HEATED DELI 🔥			
CG5048HD	50" x 35.31" x 48"	208-240/60/1 (4 wire)	585
CG5948HD	59" x 35.31" x 48"	208-240/60/1 (4 wire)	660
CG7748HD	77" x 35.31" x 48"	208-240/60/1 (4 wire)	800

Continued on next page >

ACCESSORIES *Curved Glass Bakery and Deli Cases*

- Black or Chrome Wire Shelves In Lieu of White
- Glass Shelves In Lieu of Wire (Per Tier)
- Black Interior (N/A on Refrigerated Deli and Heated Deli Models)
- 6" Legs
- Seismic Legs
- 2 1/2" Casters (Includes Cord and Plug) (Not Available on Heated Deli)
- 4" Casters (Includes Cord and Plug) (Not Available on Heated Deli)
- Cord and Plug (Not Available on Heated Deli)
- Front Package Shelf without Light
- Front Package Shelf with LED Light
- HDP – Heated Display Package with Humidity for Non-Refrigerated Units
36", 50", 59", 77" Units
- Joining Kit for Continuous Case Line-ups (N/A with Casters)
- Flush Ends
- Laminate Base
 - Formica® Standard Offerings (finishings ending in -58, -NT and -43)
 - Wilsonart® Standard Offerings (finishings ending in -38 and -60)
 - Plain Base without Laminate
 - Stainless Steel Base In Lieu of Laminate
- Lighted Mezzanine Shelf for Refrigerated Deli, Additional
- Rear Wrapping Board for Bakery
- Reflective Rear Doors (Pair)
- Reflective Ends (Pair)
- Laminated Flush Ends In Lieu of Removable End Panels
- White or Mirrored Interior Ends with Laminated Exterior
- Remote Refrigeration with Outdoor Condensing Unit
- Remote Refrigeration with Indoor Condensing Unit
- Remote Refrigeration without Compressor Supplied (EEV Included)
- Rear Intake and Discharge
- Locks (Front and Rear Door)
- Scale Stand
- Deli Step Riser or Pan Holder (Per Section)
- Top Cutting Board, White
- Stainless Steel Display Deck
- Fan Kit (CGD Models Only)
- Rear Base Panel Cover (CGD Models Only)



Model CG5048HD



The Signature of Quality®

HIGH VOLUME SERIES When ordering, specify case line-up and finish.

Bakery Cases



Model SGD7748 / Model SGR5948



Model SGR5048DZ



Model SG5048HD / Model SGR7748CD

MODEL	DESCRIPTION (L X D X H)	ELECTRICAL	SHIP WEIGHT
-------	-------------------------	------------	-------------

REFRIGERATED ❄️

SGR3142	31" x 35.31" x 42"	120/60/1	460
SGR3148	31" x 35.31" x 48"	120/60/1	500
SGR3642	36" x 35.31" x 42"	120/60/1	470
SGR3648	36" x 35.31" x 48"	120/60/1	510
SGR5042	50" x 35.31" x 42"	120/60/1	615
SGR5048	50" x 35.31" x 48"	120/60/1	603
SGR5942	59" x 35.31" x 42"	120/60/1	806
SGR5948	59" x 35.31" x 48"	120/60/1	765
SGR7742	77" x 35.31" x 42"	120/60/1	890
SGR7748	77" x 35.31" x 48"	120/60/1	930

NON-REFRIGERATED N°

SGD3148	31" x 35.31" x 48"	120/60/1	380
SGD3642	36" x 35.31" x 42"	120/60/1	400
SGD3648	36" x 35.31" x 48"	120/60/1	450
SGD5042	50" x 35.31" x 42"	120/60/1	550
SGD5048	50" x 35.31" x 48"	120/60/1	575
SGD5942	59" x 35.31" x 42"	120/60/1	540
SGD5948	59" x 35.31" x 48"	120/60/1	555
SGD7742	77" x 35.31" x 42"	120/60/1	685
SGD7748	77" x 35.31" x 48"	120/60/1	715

DUAL (Left Half Refrigerated, Right Half Non-Refrigerated, from Customer Side) ❄️ N°

SGR5042DZ	50" x 35.31" x 42"	120/60/1	688
SGR5048DZ	50" x 35.31" x 48"	120/60/1	730
SGR5942DZ	59" x 35.31" x 42"	120/60/1	735
SGR5948DZ	59" x 35.31" x 48"	120/60/1	765
SGR7742DZ	77" x 35.31" x 42"	120/60/1	890
SGR7748DZ	77" x 35.31" x 48"	120/60/1	930

Deli Cases

MODEL	DESCRIPTION (L X D X H)	ELECTRICAL	SHIP WEIGHT
-------	-------------------------	------------	-------------

REFRIGERATED DELI ❄️

SGR3648CD	36" x 35.31" x 48"	120/60/1	590
SGR5048CD	50" x 35.31" x 48"	120/60/1	620
SGR5948CD	59" x 35.31" x 48"	120/60/1	650
SGR7748CD	77" x 35.31" x 48"	120/60/1	860

HEATED DELI 🔥

SG5048HD	50" x 35.31" x 48"	208-240/60/1 (4 wire)	535
SG5948HD	59" x 35.31" x 48"	208-240/60/1 (4 wire)	660
SG7748HD	77" x 35.31" x 48"	208-240/60/1 (4 wire)	800

Continued on next page >



The Signature of Quality

ACCESSORIES *High Volume Cases*

Black or Chrome Wire Shelves In Lieu of White
Glass Shelves In Lieu of Wire (Per Tier)
Black Interior (N/A on Refrigerated Deli and Heated Deli Models)
6" Legs
Seismic Legs
2 1/2" Casters (Includes Cord and Plug) (Not Available on Heated Deli)
4" Casters (Includes Cord and Plug) (Not Available on Heated Deli)
Cord and Plug (Not Available on Heated Deli)
Front Package Shelf without Light
Front Package Shelf with LED Light
HDP – Heated Display Package with Humidity for Non-Refrigerated Units 36", 50", 59", 77" Units
Joining Kit for Continuous Case Line-ups (N/A with Casters)
Flush Ends
Laminate Base
Formica® Standard Offerings (finishings ending in -58, -NT and -43)
Wilsonart® Standard Offerings (finishings ending in -38 and -60)
Plain Base without Laminate
Stainless Steel Base In Lieu of Laminate
Lighted Mezzanine Shelf for Refrigerated Deli, Additional
Rear Air Intake and Discharge
Rear Wrapping Board for Bakery
Reflective Rear Doors (Pair)
Reflective Ends (Pair)
Laminated Flush Ends In Lieu of Removable End Panels
White or Mirrored Interior Ends with Laminated Exterior
Remote Refrigeration with Outdoor Condensing Unit (EEV Included)
Remote Refrigeration with Indoor Condensing Unit (EEV Included)
Remote Refrigeration without Compressor Supplied (EEV Included)
Rear Intake and Discharge
Locks (Front and Rear Door)
Scale Stand
Deli Step Riser or Pan Holder (Per Section)
Top Cutting Board, White
Stainless Steel Display Deck
Fan Kit (CGD Models Only)
Rear Base Panel Cover (CGD Models Only)



The Signature of Quality®

Specialty Display Cases

LOW PROFILE MERCHANDISERS

When ordering, specify finish.



Model LPRSS4

MODEL	DESCRIPTION (L X D X H)	ELECTRICAL	SHIP WEIGHT
REFRIGERATED SELF-SERVE ❄️			
LPRSS3	36" x 34" x 46"	120/60/1	470
LPRSS4	48" x 34" x 46"	120/60/1	550
LPRSS5	60" x 34" x 46"	208-240/60/1	625
LPRSS6	72" x 34" x 46"	208-240/60/1	715

ACCESSORIES *Low Profile Self-Serve Merchandisers*

- Recessed Casters (Includes Cord and Plug)
- 2 1/2" or 4" Casters (Includes Cord and Plug)
- 6" Legs
- Seismic Legs
- Laminate Base
 - Formica® Standard Offerings (finishings ending in -58, -NT and -43)
 - Wilsonart® Standard Offerings (finishings ending in -38 and -60)
 - Stainless Steel Base In Lieu of Laminate
- Remote Refrigeration with Outdoor Condensing Unit (EEV Included)
- Remote Refrigeration with Indoor Condensing Unit (EEV Included)
- Remote Refrigeration without Compressor Supplied (EEV Included)
- Sound Deadening Kit
- Reflective End Glass (Pair)
- Pair of Flush End Panels for Counter Installations (Includes Mirrored Interior)
- Rear Access Doors
- Two-Tier Stainless Steel Display Step In Lieu of Shelving
- Glass Shelves - In Lieu of Black (Per Tier)
- Shelving, Two Tier (Glass or Stainless) - In Lieu of Black
- Joining Kit for Continuous Line-ups (N/A with Casters)
- Security Night Cover, Black Polycarbonate
- Front Condensing Unit Air Discharge
- Rear Air Intake and Discharge
- Stainless Steel Interior, Includes Shelves
- Stainless Shelves - In Lieu of Black (Per Tier)
- Condensate Evaporator Assembly – Required if No Drain Available (LPRSS5 and LPRSS6 only) (Field Install Kit, Dedicated 120V / 5A Circuit Required)
- Condensate Pump (Standard on LPRSS5 and LPRSS6 and Remote Cases)

HIGH PROFILE VISION SERIES MERCHANDISERS

When ordering, specify finish.

MODEL	DESCRIPTION (L X D X H)	ELECTRICAL	SHIP WEIGHT
REFRIGERATED SELF-SERVE ❄️			
VRSS3660S / VRSS3660C	36" x 33" x 60"	120/60/1	490
VRSS4860S / VRSS4860C	47.25" x 33" x 60"	208-240/60/1	580
VRSS6060S / VRSS6060C	59.25" x 33" x 60"	208-240/60/1	710
VRSS7260S / VRSS7260C	71.25" x 33" x 60"	208-240/60/1	800
VRSS3678S / VRSS3678C	36" x 33" x 78"	120/60/1	695
VRSS4878S / VRSS4878C	47.25" x 33" x 78"	208-240/60/1	775
VRSS6078S / VRSS6078C	59.25" x 33" x 78"	208-240/60/1	985
VRSS7278S / VRSS7278C	71.25" x 33" x 78"	208-240/60/1	1040
NON-REFRIGERATED SELF-SERVE N°			
VNSS3660S / VNSS3660C	36" x 33" x 60"	120/60/1	445
VNSS4860S / VNSS4860C	47.25" x 33" x 60"	120/60/1	535
VNSS6060S / VNSS6060C	59.25" x 33" x 60"	120/60/1	665
VNSS7260S / VNSS7260C	71.25" x 33" x 60"	120/60/1	755
VNSS3678S / VNSS3678C	36" x 33" x 78"	120/60/1	655
VNSS4878S / VNSS4878C	47.25" x 33" x 78"	120/60/1	735
VNSS6078S / VNSS6078C	59.25" x 33" x 78"	120/60/1	940
VNSS7278S / VNSS7278C	71.25" x 33" x 78"	120/60/1	995

ACCESSORIES *High Profile Vision Series Refrigerated / Non-Refrigerated Self-Serve Merchandisers*

Laminate Base

Formica® Standard Offerings (finishings ending in -58, -NT and -43)

Wilsonart® Standard Offerings (finishings ending in -38 and -60)

Graphics Package

White Interior (Including Shelving)

Stainless Steel Exterior Finish

Stainless Steel Interior (Including Shelving)

Reflective End Glass - Square (Pair)

Reflective End Glass - Curved (Pair)

Solid End Panels (Mirrored) (Pair)

LED Lights Below Shelves

Additional Painted Shelf (Per Tier, No Light)

Additional Stainless Steel Shelf (Per Tier, No Light)

Additional Lighted (LED) Shelf

Front Wire Basket



Model VRSS3660C



Model VRSS7278C

Continued on next page >



The Signature of Quality®



Model VRSS4878S

ACCESSORIES *High Profile Vision Series Refrigerated / Non-Refrigerated Self-Serve Merchandisers (Continued)*

Stainless Steel Shelving (In Lieu of Black shelves) per shelf

Peg Hooks (Per Tier)

Clear or Reflective Sliding Rear Doors (Solid Hinged on 36" cases)

Roll-up Security Cover (Square End Profile)

Removable Security Cover

Recessed Casters

4" Casters

6" Legs

Seismic Legs

Skirt w/4" casters or legs

Joining Kit for Continuous Line-Ups (N/A With Casters) w/ Glass

Joining Kit for Continuous Line-Ups (N/A With Casters) w/o Glass

Joining Kit for Continuous Line-Ups (N/A With Casters)

Heated to Refrigerated (solid w/ mirrored panel)

Condensate Evaporator Assembly (Field Install)

Remote Refrigeration Without Compressor
(EEV and Condensate Pump Included)

Remote Refrigeration With Indoor Condensing Unit
(EEV and Condensate Pump Included)

Remote Refrigeration With Outdoor Condensing Unit

Rear Air Intake and Discharge (VRSS Models Only)

Front Cart Bumper

Self-Cleaning Condenser

HIGH PROFILE VISION SERIES HEATED MERCHANDISERS

When ordering, specify finish.

MODEL	DESCRIPTION (L X D X H)	ELECTRICAL	SHIP WEIGHT
HEATED SELF-SERVE 🔥			
VHSS2478S / VHSS2478C	24" x 33" x 78"	208-240/60/1	510
VHSS3678S / VHSS3678C	36" x 33" x 78"	208-240/60/1	555
VHSS2460S / VHSS2460C	24" x 33" x 60"	208-240/60/1	310
VHSS3660S / VHSS3660C	36" x 33" x 60"	208-240/60/1	355
VHSS4860S / VHSS4860C	47.25" x 33" x 60"	208-240/60/1	490

ACCESSORIES *High Profile Vision Series Heated Self-Serve Merchandisers*

Laminate Base

Formica® Standard Offerings (finishings ending in -58, -NT and -43)

Wilsonart® Standard Offerings (finishings ending in -38 and -60)

Graphics Package

Stainless Steel Exterior Finish

Reflective End Glass - Square (Pair)

Reflective End Glass - Curved (Pair)

Solid End Panels (Mirrored) (Pair)

LED Lights Below Shelves

Clear or Reflective Sliding Rear Doors (Solid Hinged on 24" cases)

Recessed Casters

4" Casters

6" Legs

Seismic Legs

Skirt with Casters or Legs

Joining Kit for Continuous Line-Ups (N/A With Casters) w/ Glass

Joining Kit for Continuous Line-Ups (N/A With Casters) w/o Glass

Joining Kit for Continuous Line-Ups (N/A With Casters)

Heated to Refrigerated (solid w/ mirrored panel)

Front Cart Bumper



Model VHSS3678S



Model VHSS3678C



The Signature of Quality®

HIGH PROFILE 24" SLIM LINE MERCHANDISERS



MODEL	DESCRIPTION (L X D X H)	ELECTRICAL	SHIP WEIGHT
REFRIGERATED SELF-SERVE ❄️			
RSSL-360SC	36" x 24" x 60"	120/60/1	740
RSSL-460SC	48" x 24" x 60"	120/60/1	800
RSSL-560SC	60" x 24" x 60"	208-240/60/1	1,015
RSSL-660SC	72" x 24" x 60"	208-240/60/1	1,075
RSSL378SC	36" x 24" x 78"	120/60/1	800
RSSL478SC	48" x 24" x 78"	208-240/60/1	892
RSSL578SC	60" x 24" x 78"	208-240/60/1	904
RSSL678SC	72" x 24" x 78"	208-240/60/1	1,180

ACCESSORIES *High Profile Slim-Line Refrigerated Self-Serve Merchandisers*

LED Top Light – 3500K Standard

All White Case (Interior, Exterior, Trim and Base)

White Interior (Includes Shelving)

Stainless Interior (Includes Shelving)

360, 378, 460, 478

578

678

Stainless Steel Interior Back

36", 48"

60", 72"

Stainless Steel Shelves (Per Tier)

36", 48", 60"

72"

2 1/2" Casters

2 1/2" Casters with Skirt

6" Legs

Seismic Legs

Joining Kit for continuous lineups (N/A with Casters option)

Cord and Plug

Laminate Base

Formica® Standard Offerings (finishings ending in -58, -NT and -43)

Wilsonart® Standard Offerings (finishings ending in -38 and -60)

Stainless Steel Finish In Lieu of Laminate

36", 48"

60", 72"

LED Lights Below Shelves – 3500K

360, 460

378, 478

578, 678

Security Night Cover – Removable Black Polycarbonate

Additional Black Shelf (Non Lighted)

Additional Black Shelf (LED Lighted-3500K)

Glass Shelves (Per Tier)

Sound Deadening Kit

Deli Meat Pegs (Per Tier) (In Lieu of Shelves)

Remote Refrigeration with Outdoor Condensing Unit (EEV Included)

Remote Refrigeration with Indoor Condensing Unit (EEV Included)

Remote Refrigeration without Compressor Supplied (EEV Included)

Condensate Pump – (In Lieu of Pan)

Condensate Evaporator Assembly – Required if No Drain Available

(Field Install Kit, Dedicated 120V / 5A Circuit Required) (Remote Only)

Reflective End Glass (Pair)

HIGH PROFILE MULTI-PURPOSE MILK MERCHANDISER

When ordering, specify finish.

MODEL	DESCRIPTION (L X D X H)	ELECTRICAL	SHIP WEIGHT
-------	-------------------------	------------	-------------

REFRIGERATED SELF-SERVE ❄️

LMDM4878SC	49.7" x 40.2" x 78"	208-240/60/1	1150
------------	---------------------	--------------	------

ACCESSORIES *High Profile Multi-Purpose Self-Serve Refrigerated Milk Merchandisers*

Laminate Base

Formica® Standard Offerings (finishings ending in -58, -NT and -43)

Wilsonart® Standard Offerings (finishings ending in -38 and -60)

Stainless Steel In Lieu of Laminate

Black Interior (Including Shelving)

Stainless Steel Interior (Including Shelving)

17" additional shelf w/ LED Light (Single Layer of Milk Crates)

Stainless

Black or White

6" legs (Comes Standard with 2 1/2" Casters)

Roll-down Security Cover (White or Black)

Removable Security Cover – Black Polycarbonate

Reflective End Glass (Pair)

Graphic Wrap

Sliding Rear Access Doors (Clear) (Includes Door Lock)

Sliding Rear Access Doors (Reflective) (Includes Door Lock)

Rear Door Locks (Standard with Security covers)



Model LMDM4878SC

HIGH PROFILE MILK MERCHANDISER

MODEL	DESCRIPTION (L X D X H)	ELECTRICAL	SHIP WEIGHT
-------	-------------------------	------------	-------------

REFRIGERATED SELF-SERVE ❄️

RSSM378SC-MLK	36" x 30" x 86.5"	120/60/1	885
---------------	-------------------	----------	-----

ACCESSORIES *High Profile Self-Serve Refrigerated Milk Merchandiser*

Castors (Recessed only)

Laminate Base

Formica® Standard Offerings (finishings ending in -58, -NT and -43)

Wilsonart® Standard Offerings (finishings ending in -38 and -60)

Stainless Steel Exterior Finish

Stainless Interior w/ Stainless Shelves

Black interior w/ Black Shelves

Reflective End Glass

Rear Access Hinged Door

Removable Security Cover

Roll Down Security Cover (White, Gray or Black)

Top Mount Light Box

Graphic Wrap

Rear Door Locks (Standard when Ordered with Security Cover)

Front Mounted Controls



Model RSSM378SC-MLK



The Signature of Quality®

HIGH PROFILE SPECIALTY MERCHANDISER



RSSM3078

MODEL	DESCRIPTION (L X D X H)	ELECTRICAL	SHIP WEIGHT
REFRIGERATED SELF-SERVE ❄️			
RSSM3078SC	30" x 28.75" x 78"	120/60/1	635
ACCESSORIES <i>High Profile Refrigerated Self-Serve Specialty Merchandiser</i>			
Laminate Base			
Formica® Standard Offerings (finishings ending in -58, -NT and -43)			
Wilsonart® Standard Offerings (finishings ending in -38 and -60)			
Recessed Casters			
2 1/2" Casters			
6" Legs			
Seismic Legs			
White Interior (Including Shelving)			
Skirt w/Casters or Legs			
Stainless Steel Exterior Finish			
Condensate Pump			
Stainless Steel Interior Back			
Stainless Steel Shelf per Tier - In Lieu of Black (Per Tier)			
Stainless Steel Slanted Display Deck			
Reflective End Glass (Pair)			
Additional Lighted (LED Shelves)			
Removable Security Cover			
LED Lights Below Shelves			

HIGH PROFILE MULTI-DECK MERCHANDISERS *(Remote Only)* When ordering, specify finish.



Model LMD7278R

MODEL	DESCRIPTION (L X D X H)	ELECTRICAL	SHIP WEIGHT
REFRIGERATED SELF-SERVE ❄️			
LMD4878R	49.8" x 38" x 78"	120/60/1	1,011
LMD7278R	73.8" x 38" x 78"	120/60/1	1,275
LMD9678R	97.8" x 38" x 78"	120/60/1	1,538
ACCESSORIES <i>High Profile Multi-Deck Refrigerated Self-Serve Merchandisers</i>			
Black Interior (Includes Shelving)			
Stainless Steel Interior (Includes Shelving)			
Laminate Base			
Formica® Standard Offerings (finishings ending in -58, -NT and -43)			
Wilsonart® Standard Offerings (finishings ending in -38 and -60)			
Stainless Steel Finish In Lieu of Laminate			
48"			
72"			
96"			
Stainless Shelves In Lieu of Black (per tier)			
48"			
72"			
96"			
Standard Remote without Compressor			
Top Mount Shroud (For Top Condensing Unit Option)			
Black			
Stainless Steel			
Remote Refrigeration with Top Mount Condensing Unit (Contact Factory for Electrical Requirements)			
Remote Refrigeration with Outdoor Condensing Unit			
Remote Refrigeration with Indoor Condensing Unit			

Continued on next page >

ACCESSORIES High Profile Multi-Deck Refrigerated Self-Serve Merchandisers
(Continued)

Security Cover (Black Finish or Aluminum Finish)
Reflective End Glass (Pair)
Condensate Pump
Deli Meat Pegs - In Lieu of shelves (per Tier)
White Top Canopy
Joining Kit For Continuous Line-ups

ISLAND MERCHANDISER

MODEL	DESCRIPTION (L X D X H)	ELECTRICAL	SHIP WEIGHT
REFRIGERATED SELF-SERVE ❄️			
IMSS60SC-2	60" x 40" x 55"	208-240/60/1	860
IMSS60SC-3	60" x 40" x 60"	208-240/60/1	864
IMSS84SC-2	84" x 40" x 55"	208-240/60/1	1,000
IMSS84SC-3	84" x 40" x 60"	208-240/60/1	1,112
IMSS120SC-2	120.5" x 40.5" x 57"	208-240/60/1	1,375
IMSS120SC-3	120.5" x 40.5" x 62"	208-240/60/1	1,569

ACCESSORIES Island Merchandiser

Cart Bumper (Black)
Cord and Plug
Recessed Casters (Includes Cord and Plug)
2 1/2" or 4" Casters (Includes Cord and Plug)
6" Legs
Seismic Legs
Model IMSS60SC-2, IMSS84SC-2, IMSS120SC-2 and Remote Models come standard with Condensate Pump
Condensate Evaporator Assembly – Required if No Drain Available (Field Install Kit, Dedicated 208/240V / 20A Circuit Required)
Special Base Color - Powder Coat Finish
Laminate Base
Formica® Standard Offerings (finishings ending in -58, -NT and -43)
Wilsonart® Standard Offerings (finishings ending in -38 and -60)
Stainless Steel Top
IMSS60
IMSS84
IMSS120
Stainless Steel Band
IMSS60
IMSS84
IMSS120
Stainless Steel Base
IMSS60
IMSS84
IMSS120
Stainless Steel Tower and Stainless Steel Shelves
IMSS60
IMSS84
IMSS120
Remote Refrigeration without Compressor Supplied (EEV Included)
Remote Refrigeration with Outdoor Condensing Unit (EEV Included)
Remote Refrigeration with Indoor Condensing Unit (EEV Included)
Top-Mounted Electrical (Cord Not Available)



Model IMSS60SC

Continued on next page >



The Signature of Quality®

Product Portfolio

ACCESSORIES *Island Merchandiser (Continued)*

Top-Mounted Refrigeration (Remote Only)

Top-Mounted Condensate Pump Drain Line

Top Chase Kit (Black or White 4" x 4" x 10' Long)

Top Chase Kit (Stainless Steel 4" x 4" x 10' Long)

Price Tag Molding (60", 84")

Price Tag Molding (120")

Graphic Wrap Band/Base

Condenser Air Filter

END CAP

MODEL	DESCRIPTION (L X D X H)	ELECTRICAL	SHIP WEIGHT
REFRIGERATED SELF-SERVE ❄️			
ECSS40SC	40" x 40" x 60"	208-240/60/1	743
ECSS60SC	60" x 40" x 60"	208-240/60/1	937

ACCESSORIES *End Cap*

Cart Bumper (Black)

Recessed Casters (Includes Cord and Plug)

2 1/2" or 4" Casters (Includes Cord and Plug)

Cord and Plug

6" Legs

Seismic Legs

Condensate Evaporator Assembly – Required if No Drain Available
(Field Install Kit, Dedicated 120V / 5A Circuit Required)

Condensate Evap Assembly -High Capacity (ECSS60 only) (240V / 20A Circuit Required)

Laminate Base

Formica® Standard Offerings (finishings ending in -58, -NT and -43)

Wilsonart® Standard Offerings (finishings ending in -38 and -60)

Stainless Steel Top

Stainless Steel Band

Stainless Steel Base

Stainless Steel Tower and Stainless Shelves

Remote Refrigeration without Compressor Supplied (EEV Included)

Remote Refrigeration with Outdoor Condensing Unit (EEV Included)

Remote Refrigeration with Indoor Condensing Unit (EEV Included)

Top-Mounted Electrical (Cord Not Available)

Top-Mounted Refrigeration (Remote Only)

Top-Mounted Condensate Pump Drain Line

Top Chase Kit Connections (Black Texture/White 4" x 4" x 10' Long)

Top Chase Kit (Stainless Steel 4" x 4" x 10' Long)

Price Tag Molding

Graphic Wrap Band/Base

Graphic Wrap Band/Base/Canopy

Condenser Air Filter



Model ECSS40SC

HYBRID MERCHANDISERS

MODEL	DESCRIPTION (L X D X H)	ELECTRICAL	SHIP WEIGHT
SERVICE REFRIGERATED OVER SELF-SERVE REFRIGERATED ❄️			
CRR3628/RSS3SC	36.25" x 43.25" x 72.5"	120/60/1	847
CRR4828/RSS4SC	48" x 43.25" x 72.5"	120/60/1	1,010
SERVICE NON-REFRIGERATED OVER SELF-SERVE REFRIGERATED N° ❄️			
CD3628/RSS3SC	36.25" x 39" x 69.75"	120/60/1	847
CD4828/RSS4SC	48" x 39" x 69.75"	120/60/1	1,010
SELF-SERVE NON-REFRIGERATED OVER SELF-SERVE REFRIGERATED N° ❄️			
CD3628SS/RSS3SC	36.25" x 39" x 69.75"	120/60/1	764
CD4828SS/RSS4SC	48" x 39" x 69.75"	120/60/1	900
SERVICE HEATED OVER SELF-SERVE REFRIGERATED 🔥 ❄️			
CH3628/RSS3SC	36.25" x 39" x 69.75"	120/60/1	790
CH4828/RSS4SC	48" x 39" x 69.75"	120/60/1	939
SELF-SERVE HEATED OVER SELF-SERVE REFRIGERATED 🔥 ❄️			
CH3628SS/RSS3SC	36.25" x 39" x 69.75"	120/60/1	790
CH4828SS/RSS4SC	48" x 39" x 69.75"	120/60/1	935

ACCESSORIES *Top Display*

- Glass Shelves (For Refrigerated and Non-Refrigerated)
- Reflective Ends (Pair)
- Reflective Rear Doors

ACCESSORIES *Self-Serve Refrigerated Base*

- Energy Saving Night Curtain
- Stainless Steel Trim - In Lieu of Black
- Laminate Base
 - Formica® Standard Offerings (finishings ending in -58, -NT and -43)
 - Wilsonart® Standard Offerings (finishings ending in -38 and -60)

- Mirrored Interior Ends (Pair)
- Reflective End Glass (Pair)
- Rear Door, Lower Unit not available with CRR Top
- Rear Door Lock
- Security Night Cover (Black Poly Carbonate)
- Stainless Steel Steps In Lieu of Shelves
- 2 1/2" or 4" Casters
- 6" Legs
- Seismic Legs



Model CRR3628/RSS3SC



Model CD3628SS/RSS3SC



Model CH3628/RSS3SC



The Signature of Quality®

CONVERTIBLE SERVICE OVER REFRIGERATED SELF-SERVE ❄️



Model SSRC5952



Model SSRC5952

MODEL	DESCRIPTION (L X D X H)	ELECTRICAL	SHIP WEIGHT
SSRC2452	24" x 34" x 52"	120/60/1	480
SSRC3652	36" x 34" x 52"	120/60/1	631
SSRC5052	50" x 34" x 52"	208-240/60/1	782
SSRC5952	59" x 34" x 52"	208-240/60/1	836
SSRC7752	77" x 34" x 52"	208-240/60/1	1,018

ACCESSORIES *Service Top Display*

- Reflective Rear Doors
- Glass Shelves (One Tier)

ACCESSORIES *Self-Serve Refrigerated Base*

- Recessed Casters (Includes Cord and Plug)
- 2 1/2" or 4" Casters (Includes Cord and Plug)
- Cord and Plug
- 6" Legs
- Seismic Legs
- Laminate Base
 - Formica® Standard Offerings (finishings ending in -58, -NT and -43)
 - Wilsonart® Standard Offerings (finishings ending in -38 and -60)
 - Stainless Steel Base In Lieu of Laminate

- Stainless Steel Interior Includes Steps
- Energy Saving Night Curtain
- Security Night Cover (Black Poly Carbonate)
- Solid Rear Sliding Access Doors – Bottom Section
- Remote Refrigeration without Compressor Supplied (EEV Included)
- Remote Refrigeration with Indoor Condensing Unit (EEV Included)
- Remote Refrigeration with Outdoor Condensing Unit (EEV Included)
- Rear Wrapping Board
- Black Wire Shelf (or Glass) with Light In Lieu of Display Steps
- Reflective End Glass (Top and Bottom Sections) (Pair)
- Front Basket for Non-Refrigerated Products
- Condensate Pump (In Lieu of Pan) (Standard on remote cases)
- Condensate Evaporator Assembly – Required If No Drain Available (Field Install Kit, Dedicated 120V / 5A Circuit Required)

PREPARED FOODS REFRIGERATED SELF-SERVE MERCHANDISER ❄️

MODEL	DESCRIPTION (L X D X H)	ELECTRICAL	SHIP WEIGHT
SSRPF3652	36" x 34" x 52"	120/60/1	590
SSRPF5052	50" x 34" x 52"	208-240/60/1	765
SSRPF5952	59" x 34" x 52"	208-240/60/1	845
SSRPF7752	77" x 34" x 52"	208-240/60/1	1,010

ACCESSORIES *Prepared Foods Refrigerated Self-Serve Merchandiser*

Recessed Casters (Includes Cord and Plug)
2 1/2" or 4" Casters (Includes Cord and Plug)
Cord and Plug
6" Legs
Seismic Legs
Laminate Base
Formica® Standard Offerings (finishings ending in -58, -NT and -43)
Wilsonart® Standard Offerings (finishings ending in -38 and -60)
Stainless Steel Base In Lieu of Laminate
White Interior (Includes Shelves)
Stainless Steel Interior Includes Shelves
Stainless Steel Top
Security Night Cover (Black Poly Carbonate)
Remote Refrigeration with Outdoor Condensing Unit (EEV Included)
Remote Refrigeration with Indoor Condensing Unit (EEV Included)
Remote Refrigeration without Compressor Supplied (EEV Included)
Solid Rear Sliding Access Doors
Glass Shelves with Light In Lieu of Solid Shelves (Per Tier)
Stainless Steel Shelves (In Lieu of Black Shelves) (Per Tier) 36", 50", and 59"
Stainless Steel Shelves (In Lieu of Black Shelves) (Per Tier) 77"
Reflective End Glass
Energy Saving Night Curtain
Front Basket for Non-Refrigerated Products
Condensate Pump (In Lieu of Pan) (remote standard with Cond. Pump)
Condensate Evaporator Assembly – Required If No Drain Available (Field Install Kit, Dedicated 120V / 5A Circuit Required)
Joining Kit for Continuous Line-ups (N/A with Casters)
Rear Vent Exhaust Extension (Adds 4" to Rear of Case) (Rear Doors N/A)



Model SSRPF5952



The Signature of Quality®

VERSATILE SERVICE-TOP OVER REFRIGERATED SELF-SERVE MERCHANDISER ❄️



Model SSRVS5942

MODEL	DESCRIPTION (L X D X H)	ELECTRICAL	SHIP WEIGHT
SSRVS3642	36" x 34" x 42"	120/60/1	590
SSRVS5042	50" x 34" x 42"	208-240/60/1	735
SSRVS5942	59" x 34" x 42"	208-240/60/1	845
SSRVS7742	77" x 34" x 42"	208-240/60/1	975

ACCESSORIES *Versatile Service Top Over Refrigerated Self-Serve Merchandiser*

Recessed Casters (Includes Cord and Plug)

2 1/2" or 4" Casters (Includes Cord and Plug)

Cord and Plug

6" Legs

Seismic Legs

Laminate Base

Formica® Standard Offerings (finishings ending in -58, -NT and -43)

Wilsonart® Standard Offerings (finishings ending in -38 and -60)

Stainless Steel Base In Lieu of Laminate

White Interior (Includes Shelves)

Stainless Steel Interior (Includes Shelves)

Security Night Cover (Black Poly Carbonate)

Solid Rear Sliding Access Doors for Bottom Section

Glass Shelves with Light In Lieu of Solid Shelves (Per Tier)

Remote Refrigeration without Compressor Supplied (EEV Included)

Remote case Standard with Condensate Pump

Remote Refrigeration with Outdoor Condensing Unit (EEV Included)

Remote case Standard with Condensate Pump

Remote Refrigeration with Indoor Condensing Unit (EEV Included)

Remote case Standard with Condensate Pump

Reflective End Glass (Pair)

Energy Saving Night Curtain

Front Basket for Non-Refrigerated Products

Condensate Pump (In Lieu of Pan) Remote case Standard with Condensate Pump

Condensate Evaporator Assembly – Required If No Drain Available (Field Install Kit, Dedicated 120V / 5A Circuit Required)

Joining Kit for Continuous Line-ups (N/A with Casters)

Sneeze Guard with Top Service Shelf

36", 50"

59", 77"

Sneeze Guard with Two Bakery Shelves (Night Curtain N/A with Sneeze Guard/Bakery Shelves)

36", 50"

59", 77"

Rear Wrapping Board

Rear Vent Exhaust Extension (Adds 4" to Rear of Case 42" Only)

Not Available with Rear Door Option

UNDER-COUNTER/IN-COUNTER MERCHANDISER

MODEL	DESCRIPTION (L X D X H)	ELECTRICAL	SHIP WEIGHT
SSRVS3633	36" x 34" x 32.63"	120/60/1	550
SSRVS5033	50" x 34" x 32.63"	120/60/1	590
SSRVS5933	59" x 34" x 32.63"	208-240/60/1	676
SSRVS7733	77" x 34" x 32.63"	208-240/60/1	980

ACCESSORIES *Under-Counter / In-Counter*

Recessed Casters (Includes Cord and Plug)
2 1/2" or 4" Casters (Includes Cord and Plug)
Cord and Plug
6" Legs
Seismic Legs
Rear Doors
Laminate Base
Formica® Standard Offerings (finishings ending in -58, -NT and -43)
Wilsonart® Standard Offerings (finishings ending in -38 and -60)
Stainless Steel Base In Lieu of Laminate
White Interior (Includes Step Riser)
Stainless Steel Interior (Includes Step Riser)
Stainless Steel Top In Lieu of Black Top
Security Night Cover (Black Poly Carbonate)
Remote Refrigeration without Compressor Supplied (EEV Included)
Standard with Condensate Pump
Remote Refrigeration with Indoor Condensing Unit (EEV Included)
Standard with Condensate Pump
Remote Refrigeration with Outdoor Condensing Unit (EEV Included)
Standard with Condensate Pump
Stainless Steel, Glass or Black Metal Shelf In Lieu of Step Riser (includes a light)
Energy Saving Night Curtain
Front Basket Non-Refrigerated Products
Joining Kit for Continuous Line-ups (N/A with Casters)
Reflective End Glass
Solid Ends In Lieu of Glass (Specify Curved or Square Ends)
Condensate Pump (In Lieu of Pan)
Condensate Evaporator Assembly – Required If No Drain Available (Field Install Kit, Dedicated 120V / 5A Circuit Required)



Model SSRVS
Squared End Under Counter Option



Model SSRVS5933
Shown with optional shelf



The Signature of Quality®

SANDWICH OR SALAD PREP OVER REFRIGERATED SELF-SERVE ❄️



Model SSRSP5952



Model SSRSP5952
LED lighting lower section only



Model CRB4828SS

MODEL	DESCRIPTION (L X D X H)	ELECTRICAL	SHIP WEIGHT
SSRSP5052	50" x 34" x 52"	208-240/60/1	710
SSRSP5952	59" x 34" x 52"	208-240/60/1	735
SSRSP7752	77" x 34" x 52"	208-240/60/1	940

ACCESSORIES *Sandwich or Salad Prep*

- Recessed Casters (Includes Cord and Plug)
- 2 1/2" or 4" Casters (Includes Cord and Plug)
- 6" Legs
- Seismic Legs
- Cord and Plug
- Sound Deadening Kit
- Laminate Base
 - Formica® Standard Offerings (finishings ending in -58, -NT and -43)
 - Wilsonart® Standard Offerings (finishings ending in -38 and -60)
 - Stainless Steel Base In Lieu of Laminate
- Stainless Steel Interior Includes Shelf
- Security Night Cover (Black Poly Carbonate)
- Solid Rear Sliding Access Doors for Bottom Section
- Remote Refrigeration without Compressor Supplied (EEV Included)
Standard with Condensate Pump
- Remote Refrigeration with Outdoor Condensing Unit (EEV Included)
Standard with Condensate Pump
- Remote Refrigeration with Indoor Condensing Unit (EEV Included)
Standard with Condensate Pump
- Glass Shelf with Light In Lieu of Black Shelves
- Reflective End Glass (Top and Bottom Sections) (Pair)
- Two-Tier Display Riser In Lieu of Shelf
- Rear Refrigeration Storage (Includes Rear Sliding Door and Storage Enclosure)
(N/A with Two-Tier Display Riser Option)
- Front Basket for Non-Refrigerated Products
- Condensate Pump (In Lieu of Pan)
- Field install Condensate Pan (120V / 15A) (Remote Only)
- Joining Kit for Continuous Line-ups (N/A with Casters)

COUNTERTOP MERCHANDISERS

MODEL	DESCRIPTION (L X D X H)	ELECTRICAL	SHIP WEIGHT
REFRIGERATED – SELF-CONTAINED REAR MOUNT ❄️			
CRR3628	36" x 29.7" x 28"	120/60/1	390
CRR4828	48" x 29.7" x 28"	120/60/1	450
REFRIGERATED SELF-SERVE – SELF-CONTAINED REAR MOUNT ❄️			
CRR3628SS	36" x 29.7" x 28"	120/60/1	400
CRR4828SS	48" x 29.7" x 28"	120/60/1	460
REFRIGERATED – SELF-CONTAINED BOTTOM MOUNT ❄️			
CRB3628	36" x 29.7" x 28"	120/60/1	390
CRB4828	48" x 29.7" x 28"	120/60/1	450
REFRIGERATED SELF-SERVE – SELF-CONTAINED BOTTOM MOUNT ❄️			
CRB3628SS	36" x 29.7" x 28"	120/60/1	497
CRB4828SS	48" x 29.7" x 28"	120/60/1	460
NON-REFRIGERATED N°			
CD3628	36" x 29.7" x 28"	120/60/1	275
CD4828	48" x 29.7" x 28"	120/60/1	350

Continued on next page >

NON-REFRIGERATED – SELF-SERVE ^{Nº} (continued)

CD3628SS	36" x 29.7" x 28"	120/60/1	275
CD4828SS	48" x 29.7" x 28"	120/60/1	350

HEATED

CH2428	24" x 29.7" x 28"	120/60/1	290
CH3628	36" x 29.7" x 28"	120/60/1	333
CH4828	48" x 29.7" x 28"	120/60/1	375

HEATED – SELF-SERVE

CH2428SSD	24" x 29.7" x 28"	120/60/1	290
CH3628SSD	36" x 29.7" x 28"	120/60/1	333
CH4828SSD	48" x 29.7" x 28"	120/60/1	375

ACCESSORIES *Signature Series Countertop*

- Glass Shelves (Set) - Not Available on Heated Case
- Solid Insulated End Panel (For Heated Case Lineup with Refrigerated / Ambient Case)
- Reflective Ends (Pair)
- Reflective Rear Doors
- Remote Refrigeration without Compressor Supplied (EEV Included)
- Remote Refrigeration with Outdoor Condensing Unit (EEV Included)
- Remote Refrigeration with Indoor Condensing Unit (EEV Included)
- Front Mount Control (On Heated Cases Only)
- Joining Kit for Continuous Line-ups
- Pedestal and Cutting Board 36" dry only to match refrigerated case
- Pedestal and Cutting Board 48" dry only to match refrigerated case
- Rear Door Lock (Service Units Only)



Model CD4828SS



Model CH3628SS

HIGH PROFILE SELF-SERVE COUNTERTOP MERCHANDISERS When ordering, specify finish.

MODEL	DESCRIPTION (L X D X H)	ELECTRICAL	SHIP WEIGHT
REFRIGERATED SELF-SERVE			
TSSM2454	24.71" x 28.45" x 53.71"	120/60/1	400

**Comes standard with condensate pump

ACCESSORIES *Countertop Self-Serve Merchandisers*

- White Powder Coated Exterior Finish, Interior and Shelving
- Stainless Steel Exterior Finish, Interior and Shelving



TSSM2454 Specialty Merchandiser

VISION SERIES QUICK-SHIP CASES

MODEL	DESCRIPTION (L X D X H)	ELECTRICAL	SHIP WEIGHT
REFRIGERATED SELF-SERVE			
VRSS3678C - QS	36" x 33" x 78"	120/60/1	490
VRSS4878C - QS	47.25" x 33" x 78"	208-240/60/1	580
VRSS7278C - QS	71.25" x 33" x 78"	208-240/60/1	800

*Includes Self-Cleaning Condenser, Curved Glass Ends, and Shelf Lights



Model VRSS7278C-QS



Elements Bakery and Deli Cases

MODEL	DESCRIPTION (L X D X H)	ELECTRICAL	SHIP WEIGHT
-------	-------------------------	------------	-------------

REFRIGERATED BAKERY ❄️

ECGR50	50" x 35" x 48"	120/60/1	640
ECGR59	59" x 35" x 48"	120/60/1	765
ECGR77	77" x 35" x 48"	120/60/1	930

*Optional Field Install Caster Kit - Shipped Loose

NON-REFRIGERATED BAKERY N°

ECGD50	50" x 35" x 48"	120/60/1	500
ECGD59	59" x 35" x 48"	120/60/1	535
ECGD77	77" x 35" x 48"	120/60/1	715

*Optional Field Install Caster Kit - Shipped Loose

REFRIGERATED DELI ❄️

ECGR50CD	50" x 35" x 48"	120/60/1	620
ECGR59CD	59" x 35" x 48"	120/60/1	650
ECGR77CD	77" x 35" x 48"	120/60/1	870

*Optional Field Install Caster Kit - Shipped Loose

Elements Countertop Merchandisers

MODEL	DESCRIPTION (L X D X H)	ELECTRICAL	SHIP WEIGHT
-------	-------------------------	------------	-------------

REFRIGERATED REAR MOUNT ❄️

ERR3628	36" x 29.7" x 28"	120/60/1	390
ERR4828	48" x 29.7" x 28"	120/60/1	450

REFRIGERATED SELF-SERVE REAR MOUNT ❄️

ERR3628SS	36" x 29.7" x 28"	120/60/1	400
ERR4828SS	48" x 29.7" x 28"	120/60/1	460

HEATED 🔥

EH2428	24" x 29.7" x 28"	120/60/1	290
EH3628	36" x 29.7" x 28"	120/60/1	297
EH4828	48" x 29.7" x 28"	120/60/1	375

HEATED SELF-SERVE 🔥

EH2428SSD	24" x 29.7" x 28"	120/60/1	290
EH3628SSD	36" x 29.7" x 28"	120/60/1	333
EH4828SSD	48" x 29.7" x 28"	120/60/1	375

Elements Specialty Display Cases

MODEL	DESCRIPTION (L X D X H)	ELECTRICAL	SHIP WEIGHT
-------	-------------------------	------------	-------------

REFRIGERATED SELF-SERVE LOW PROFILE ❄️

ELPRSS3	34.6" x 34" x 46"	120/60/1	469
ELPRSS4	46.6" x 34" x 46"	120/60/1	576
ELPRSS6	70.6" x 34" x 46"	208-240/60/1	750

Condensate Evaporator Assembly Field Install Kit

(Dedicated 120V / 5A Circuit Required) (for ELPRSS6 only)

*Optional Field Install Caster Kit - Shipped Loose

CONVERTIBLE SERVICE HIGH PROFILE SELF-SERVE ❄️

ESSRC5052	50" x 34" x 52"	208-240/60/1	720
ESSRC5952	59" x 34" x 52"	208-240/60/1	845
ESSRC7752	77" x 34" x 52"	208-240/60/1	970

*Optional Field Install Caster Kit - Shipped Loose

REFRIGERATED SELF-SERVE ISLAND ❄️

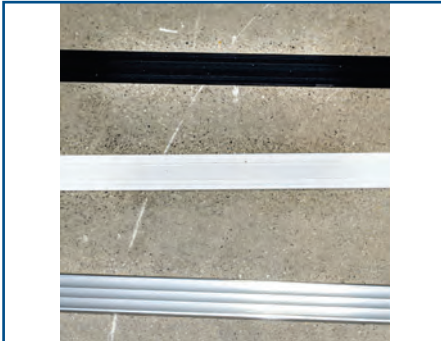
EIMSS60SC-3	60" x 40" x 60"	208-240/60/1	910
EIMSS84SC-3	84" x 40" x 60"	208-240/60/1	1375

Condensate Evaporator Assembly - Required if No Drain Available

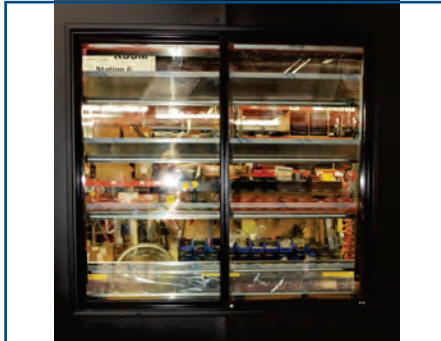
(Field Install Kit, Dedicated 240V 20A Circuit Required)

*Optional Field Install Caster Kit - Shipped Loose

OPTIONAL SALES ACCESSORIES



Price Tag Molding



Rear Sliding Doors



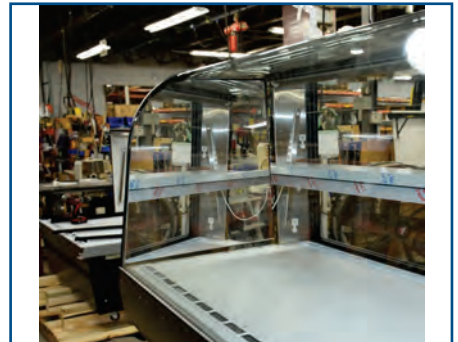
Swing/Hinged Doors



Polycarbonate Security Cover



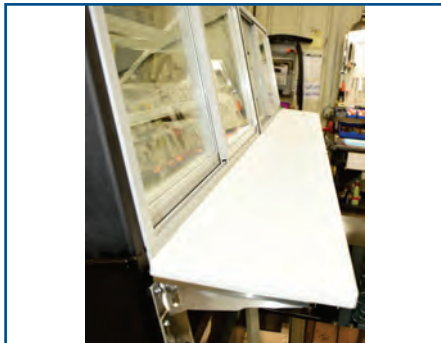
Reflective End - Straight Glass



Mirrored End - Curved Glass



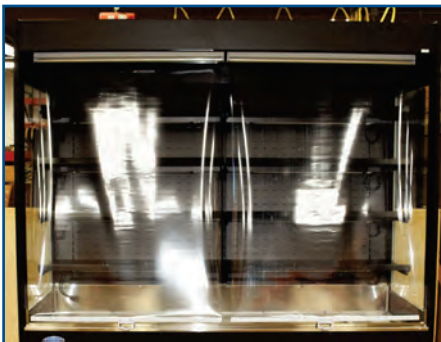
Step Riser - SSRVS



Cutting Board - Series 90



Roll Cover - VRSS



Night Curtain



Casters



Seismic Leg



Legs



The Signature of Quality

FEDERAL INDUSTRIES

A Standex Company

215 Federal Avenue, Belleville, Wisconsin 53508-9201

Phone: 800-356-4206 **Fax:** 608-424-3234

Email: Geninfo@Federalind.com **Website:** Federalind.com

